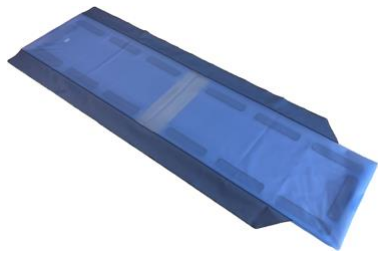


Product Data Sheet



CT Table Cover

Ref.:	Product name:	Dimensions:	Weight:	Packaging dimensions:
1164-B	CT Table Cover 2090	2090 x 720 x 20 mm	1420 g	750 x 450 x 60mm
1165-B	CT Table Cover 1790	1790 x 720 x 20 mm	1240 g	750 x 450 x 60mm
1166-B	CT Table Cover 2360	2360 x 720 x 20 mm	1600 g	750 x 450 x 60mm
1167-B	CT Table Cover 1860	1860 x 720 x 20 mm	1240 g	750 x 450 x 60mm
1168-B	CT Table Cover 2070	2070 x 720 x 20 mm	1420 g	750 x 450 x 60mm
1169-B	CT Table Cover 400	400 x 720 x 20 mm	450 g	750 x 450 x 60mm
1175-A	CT Table Cover 310	310 x 720 x 20 mm	420 g	750 x 450 x 60mm
1177-A	CT Table Cover 2190 S	2190 x 940 x 20 mm	1690 g	750 x 450 x 60mm
1209-A	CT Table Cover 2400 S	2400 x 780 x 20 mm	2000 g	750 x 450 x 60mm
1210-A	CT Table Cover 350 S	350 x 710 x 20 mm	430 g	750 x 450 x 60mm
1211-A	CT Table Cover 2170 S46	2170 x 780 x 20 mm	1650 g	750 x 450 x 60mm
1212-A	CT Table Cover 2190 S46	2190 x 780 x 20 mm	1670 g	750 x 450 x 60mm
1223-A	CT Table Cover 2400 S46	2400 x 780 x 20 mm	2000 g	750 x 450 x 60mm
1183-A	CT Table Cover 2220 P	2220 x 785 x 20 mm	1690 g	750 x 450 x 60mm
1203-A	CT Table Cover 2320 P44	2320 x 760 x 20 mm	1890 g	750 x 450 x 60mm
1204-A	CT Table Cover 2100 P	2100 x 685 x 20 mm	1450 g	750 x 450 x 60mm
1184-A	CT Table Cover 2170 G	2170 x 760 x 20 mm	1650 g	750 x 450 x 60mm
1185-A	CT Table Cover 270 G	270 x 760 x 20 mm	400 g	750 x 450 x 60mm
1205-A	CT Table Cover 2720 G	2720 x 760 x 20 mm	2600 g	750 x 450 x 60mm
1206-A	CT Table Cover 2580 G	2580 x 760 x 20 mm	2400 g	750 x 450 x 60mm
1207-A	CT Table Cover 2100 G	2100 x 760 x 20 mm	1450 g	750 x 450 x 60mm
1208-A	CT Table Cover 370 G	370 x 760 x 20 mm	440 g	750 x 450 x 60mm
1221-A	CT Table Cover 2630 G	2630 x 420 x 20 mm	2500 g	750 x 450 x 60mm
1224-A	CT Table Cover 2450 P	2450 x 720 x 20 mm	2200 g	750 x 450 x 60mm
1239-A	CT Table Cover 2580 P44	2580 x 740 x 20 mm	2400 g	750 x 450 x 60mm
1244-A	CT Table Cover 2700 P44	2700 x 740 x 20 mm	2500g	750 x 450 x 60mm

Intended use	Short-term patient positioning and stabilization device during invasive and non-invasive procedures to be used on intact patient's skin. Non-Sterile and not to be used in the sterile field.
Directives & classification	CE according to MDR – Regulation 2017/745 Class 1 product
Applied quality assurance	SN EN ISO 13485:2016
Instructions for use	Enclosed to the product

Restrictions of use	Do not use the product for purposes other than those described.	
General safety notes	Non sterile. Do not sterilize. Caution: Federal law restricts this device to sale by or on the order of a licensed health-care professional (Rx only).	
Materials	Material TPU TPU/ Nylon PA LDPE Cardboard	Component foils textile foil hook and loop fastener packaging packaging
Marking	CE	
Storage	Store in dry place / room temperature	

Figures are subject to usual tolerances. All information to the best of our current knowledge. They do not guarantee a warranted quality and are no foundation for a contractual relationship. Errors excepted.